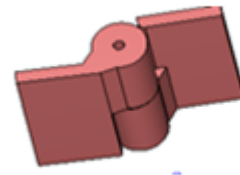


5" x 6 1/2" Zinc Plated Carbon Steel Half Mortise Hinges

Model Number: 2875LH-ZINC Half
Mortise Hinges

Price: \$ 580

- Application: Half Mortise
- Type: Left Hand
- Material Type: Carbon Steel
- Maximum Door Weight: 3,000 lbs.
- Maximum Radial Load: 1,220 lbs.
- Mount: Weld-On or Bolt-On
- Approximate Width: 6 1/2"
- Height: 5"
- Weight: 7 lbs.
- Bearing Type: Thrust and Needle Bearings
- Finish: Zinc Plated
- Service: Heavy Duty



Kiesler Machine Inc

13700 Chrissy Lane NE
Palmyra, IN. 47164-8768

Contact Info :

info@kieslermachine.com
Toll-Free : 888-565-6610
Phone : 812-364-6610



Smoother Than The Rest
Guaranteed!

Data Provided For Reference Only.